

Scope of Grant Funding

Grant funding can be made available upon: i) the review and approval by the EPF, and ii) the availability of CBI grant. To ensure that the proposals contribute towards the overall objectives of the CBI Window, basic selection criteria being applied include:

- ☞ Consistency with the National Biodiversity Strategy to 2020 and Action Plan to 2010 (June 2004).
- ☞ Appropriateness to the overall aims of strengthening conservation and environmental management, and community development in and around Central Lao Protected Areas.
- ☞ Identification and incorporation of local or regional conservation priorities.
- ☞ Demonstrated commitment of staff time and resources by implementing partners to ensure successful implementation.
- ☞ Clear and assessable outputs and results.
- ☞ Feasibility of delivering outputs with the resources proposed.
- ☞ The extent to which the proposal recognizes and incorporates lessons learned in previous initiatives in Lao PDR or in the South-East Asian region.
- ☞ The extent to which the proposal is able to provide added value by leveraging funds from additional sources that would otherwise not be available.

Existing Grant System

Through the CBI Window, the EPF is providing two types of grants:

- ☞ **Smaller Grants** (≤US\$10,000): these grants aim to support small activities including those activities to strengthen management of protected area and improving community livelihood regarding to the sustainable use of natural resources.
- ☞ **Larger Grants** (>US\$10,000): these grants aim to support larger activities including protected area management, researches, outreach activity and ecotourism.

Organization

The EPF, established in 2005 as a financially and administratively autonomous organization, aims at strengthening environmental protection, sustainable natural resources management, biodiversity conservation and community development in Lao PDR.

Day-to-day Management and implementation of the CBI Window has been delegated to the LEnS Window Management Unit (WMU), Policy and Technical guidance is provided by an inter-ministerial Project Steering Committee (PSC), Chaired by the Vice-President of STEA.

Submittal and Inquiries

Proposals may be submitted at any time. Final proposals must at least include one of the standard LENS application forms. These include:

- ☞ Standard Application Form for Smaller Community Grants (≤10,000 US\$),
- ☞ Standard Application Form for Small Protected Area (PA) Management Grants (≤10,000 US\$),
- ☞ Standard Application Form for Larger CBI Grant (>10,000 US\$).

LENS application forms are available from the LEnS WMU and from the EPF Website: <http://www.laoepf.org.la/>

Environment Protection Fund Attn. LEnS Window Management Unit

Ground floor, STEA Building
Sidamduan Road
Vientiane, Lao PDR
Tel. 021 251946
Fax. 021 251947
<http://www.laoepf.org.la>

Environment Protection Fund

Lao Environment and Social (LEnS) Project PBO ENVAIRONNEMENT ET SOCIAL (PENS) BIOLOGIE

Guidelines for the Preparation of Proposals for the '**Community and Biodiversity Investments**' Financing Window



Introduction

The Environment Protection Fund (EPF) has established a '**Community and Biodiversity Investments**' (CBI) specialized financing window to support its goal to strengthen the management of environmental and social issues in the use of natural assets in Lao PDR for enhancing quality of growth and reducing poverty. Through the CBI Window, the EPF aims to support activities and initiatives in three target Provinces (Bolikhamxay, Khamouane, Savanakheth) to:

- ☞ Strengthen management of protected areas (PA) and ensure sustainable livelihood to those communities which heavily depend on the PA; and
- ☞ Invest in on-the-ground environmental improvement activities for poor community with emphasis on biodiversity conservation, communities environmental management, livelihoods enhancements and promotion of ecotourism.

The CBI Window is supported by the Government of Lao PDR and the World Bank as part of the Lao Environment and Social (LEnS) Project.

Application Procedures

Both smaller and larger grant proposals can be submitted to the Window Management Unit anytime. Applicants for small grants will be requested to initially submit their proposals on standard form to a provincial facilitator for initial review and feedback. After consultation with the Provincial Facilitator, proposals will be submitted to the WMU for screening. If the proposal does not meet the basic requirements, the Provincial facilitator can support the applicant on how to revise the proposal and resubmit.

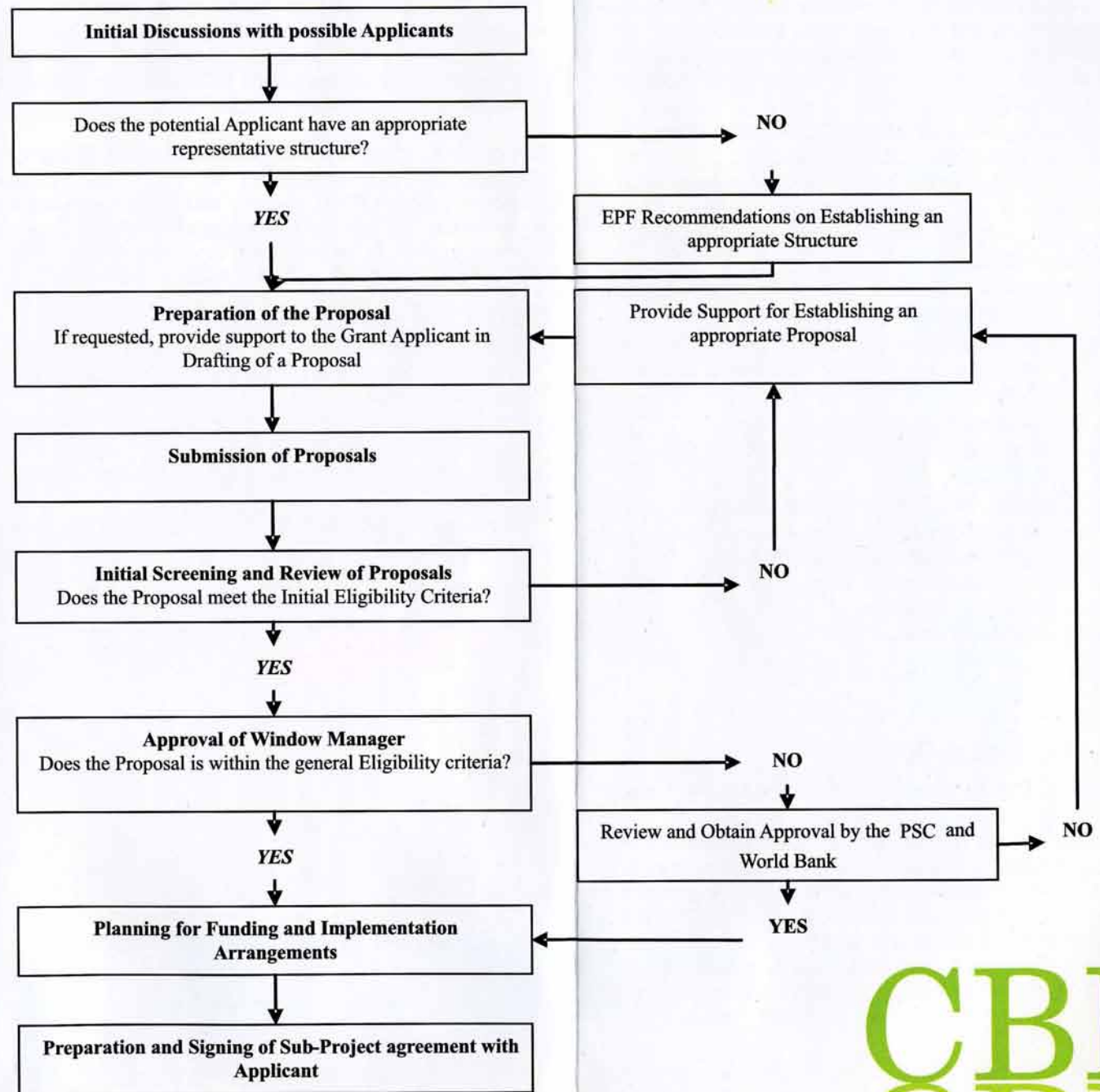
Applicants for Larger grant must follow standard guidelines, but the length of the application is not fixed. The proposals for large grant application will be reviewed by at least two peer reviewers and require endorsement by the Project Steering Committee (PSC).

Interested applicants are invited to contact the LENS WMU to obtain further information and guidance on the procedures to qualify for grant funding. Grant funding will be subject to standard monitoring procedures as specified in the Agreement to be signed between the EPF and the applicant.

Non-eligible Activities

Applicants should be aware that certain activities are not eligible for funding through the CBI Window. Excluded are:

- ☞ Any activity requiring a full EIA under either national regulatory framework or World Bank safeguard policy;
- ☞ Sub-projects involving land acquisitions, loss of physical assets or physical displacements of populations;
- ☞ Supplying for big equipment such as vehicles (car, pick up, etc), goods and equipments;
- ☞ Big civil work;
- ☞ Activities effecting ethnic groups (including their business, occupation, work, place of residence, habitat or standard of living); and
- ☞ Village development activities potentially detrimental to the environment or conservation goals.



CBI