



1

Laos People's Democratic Republic
Peace Independence Democracy Unity and Prosperity

Environment Protection Fund

PAW/LENS2 Sub-project Application

General Instructions: Please refer to the Project Implementation Manual (PIM) Volumes 1 to 5 for subproject design, implementation and monitoring/evaluation (M&E). In summary:

- Applications should be submitted in both Lao and English to EPF Office. Translating the application is SDA's responsibility. It can be financed by the subproject preparation facility, if such facility has been mobilized, or pre-financed by EPF.
- Applications must demonstrate that the subproject meets the following eligibility criteria: (a) supports a Government of Lao PDR policy, strategy and/or an official plan; (b) contributes to at least one outcome indicator and at least one intermediate outcome indicator from the LENS2 results framework; (c) fits into either the PICE or CBI EPF funding windows; (d) excludes activities from the negative check-list in the PIM, and (e) aligns with project's geographical scope which includes the national/central level and the following provinces: Bolikhamxay, Khammouane, Houaphan, Xiengkhouang, Luang Prabang, Savannakhet, Vientiane and Xaysomboun.
- Applications for protected area and wildlife sub-projects must demonstrate that the subproject meets an additional eligibility criteria: contributes to a regional or global outcome such as cross-border cooperation, knowledge transfer or prevention of illegal wildlife trade.
- Sub-projects are approved for their proposed duration. However, implementation requires the prior annual approval of an Annual Work Plan and Budget (AWPB). EPF has the possibility to cancel an approved subproject if the annual performance is consistently unsatisfactory and the achievement of its objective has become unlikely.
- An SDA can only implement one subproject at a time although additional financing is possible.

EPFO Sub-project number:

1. Sub-project delivery agency (SDA) (name/address)	Bolikhamxay Provincial Forest Resources Management Section (PFRM) of the Provincial Office of Natural Resources and Environment (PONRE) Road No 4B, Hongxay village, Paksan District, Bolikhamxay Province, Lao PDR, P.O. Box Tel: 054-280057, Fax: 054 280057, Email:
2. SDA focal point (name/function/contact details)	Mr. Somphou Choummalavong, Deputy Director, Provincial Office of Forest Resource Management (PFRM) of Bolikhamxay Province. <i>Tel: (054) 280057; Fax: 540 280057 (020) 23411115 E-mail: somphoucvm@gmail.com</i>
3. Geographic scope <i>(can be more than one option)</i>	<input type="checkbox"/> International level <input type="checkbox"/> Central/national level <input checked="" type="checkbox"/> Provincial/district level. Please indicate target provinces: Bolikhamxay <input type="checkbox"/> Protected area. Please indicate (NPA, protection forest, conservation forest and name).

¹ PICE Policy Implementation and Capacity Enhancement; CBI Community and Biodiversity Investment

4. Sub-project title	Coordination for protected area and protection forest management in Bolikhamxay Province
5. Amount requested (US\$)	US\$281,000
6. EPF's eligible funding window <i>(please check only one window)</i>	<input type="checkbox"/> Policy Implementation and Capacity Enhancement (PICE) <input checked="" type="checkbox"/> Community Biodiversity Investment (CBI)
7. Project Development Objective ²	To help strengthen selected environmental protection management systems, specifically for protected areas conservation, enforcement of wildlife laws and environmental assessment management
8. Sub-project related sectoral and institutional context, challenges and priorities <i>(Describe role of SDA, current capacity and activities related to PA/wildlife/env. and social safeguards, challenges and priority needs and approach proposed to address priority needs/gaps).</i>	<p>Overview of Bolikhamxay Province: Bolikhamxay (BLX) Province is located in the central part of the country and share borders with Thailand and Vietnam. There are 7 districts with a total population of about 271,250 people in 2014. There are three National Protected Areas (NPA) comprising Nakai-Nam Theun (27,070 ha or 1.69%), Nam Kading (169,000 ha or 10.57%), and Phou Khao Khouy (100,100 ha or 60%) and three national Protection Forests (NPFA) (about 620,260 ha) comprising Nam Gnouang-Nam Mouane NPFA (524,409 ha or 32.72%), Phoukiew - Thenechao-Phouhai (78,755 ha or 4.92%), and Nam Ngiep-Nam mang (17,297 ha or 1.08%) (See location map). Nam Mouane–Nam Gnouang (the latest NPFA in Lao PDR) is considered priority for biodiversity conservation and watershed protection and management. There are seven Provincial Protected Areas (PPAs) with total area of 71,781 ha or 4.83%, and three Provincial Protection Forests Areas (PPFA) with total area of 16,806 ha or 1.13% (see attached map 1).</p> <p>Key outputs from previous projects included a draft management plan for Nam Kading NPA, a draft management plan for Phou Chom Voy, and a draft management plan for PhooNngu however lack of budget limited their effective implementations. Funding supports for other PAs are not yet available. There is limited funding supports from hydropower projects (Nam Theun 2, Theun-Hinboun and Theun-Hinboun extension) available to affected population considered affected by the projects. Given rapid development (hydropower, mining, roads, urban, and industries) in the province, additional technical assistance and funding supports for PAs management in BLX are considered necessary.</p> <p>Current Capacity: PFRM of PONRE is responsible for management of PAs and PFs in BLX. PA management capacity is considered reasonable mainly due to technical assistance and financial support provided by THPC, the World Bank and others through the Wildlife Conservation Society (WCS) for Nam Kading NPA and the Environment Protection Fund (EPF) for Phou Chom Voy PPA and Phou Ngu PPA. These projects provided opportunity for the provincial and district staff to plan and implement the work themselves and there are key staff who have knowledge and experience in planning, awareness raising, and implementation of projects including ways to engage local community in management of protected areas. There are 45 PFRM staff including those working at district level of which 34 are volunteers and PFRM activities are carried out according to funding available. Most of these staff are new to PFRM and were reassigned from other sections. Number of staff working at district office is low, Forest Resource Management Unit of District Office of Natural Resource and Environment (DoNRE) of Khamkeuth has only 4 staff. In terms of equipment and vehicles, PFRM has some technical equipment and vehicle that granted by Japanese government and WCS including: 2 pick-up vehicles, 3</p>

² This is the proposed LENS2 PDO. Until LENS2 project becomes effective, sub-projects for LENS2 will not be processed for approval.

motorbikes, 3 digital cameras, 3 desktop computers, one multipurpose printer and one LCD projector are granted by Japanese government, and 2 pick-up vehicles, 9 motorbikes, 17 digital cameras, 5 desktop computers, 6 laptop computers, one LCD projector, 12 GPS units and 2 regular printers and some field camping equipment are funded by WCS and allowed uses specifically site such as Nam Ka Ding National Protected Area and Phou Si Thone Endangered Species Conservation Area. As we understand these kind of equipment and vehicle was allowed to use for some site of protected but to date we still need more to meet with strategy and bigger area of management of protected area and protection forest in Bolikhamxay.

Funding support is also limited and depending on budget available from projects. With support from NT2 project limited funding is available for management of Nakai-Nam Theun NPA while small fund is available for Nam Kading NPA. In 2014, as part of the biodiversity off set mechanism, PFRM has received annual funding support about \$100,000 through EPF for the management of Nam Gnouang North PFA from Theun-Hinboun hydropower. This project covers an area of 58,174 ha in the upper watershed of Nam Moune-Nam Gnouang area covering 30 villages. Nam Gnouang management approach is mainly to build local communities' ownership in the management of forest resource by building awareness and knowledge as well as giving assistance for livelihood development through the development of conservation agreements with villagers covering patrolling and managing forest resources in their village administrative areas. Current activities and budget remain limited given large area of Nam Gnouang NPFA and it's important.

Challenges and priority needs: In addition to inadequate number of staff, most of the current staff responsible for protected area management particularly those newly recruited have limited knowledge and not yet be trained systematically and actively. Participation and ownership of key stakeholders including villagers and other government sectors for protected area management is limited including cooperation with Nam Theun 2 Watershed Management and Protected Authority (NT2-WMPA) due to the lack of budget for PFRM staff to actively participate in the management activities. Smuggling of timbers and wildlife in the protected area particularly along Lao-Vietnam border is an issue in Nakai-Nam Theun NPA. Cooperation for planning with Vietnam on protected area management along the border has not been conducted seriously. Activities and implementation progress for protection forests management has been slow and limited as their management initiatives from planning have not been undertaken yet. Coordination and cooperation among PFRM staff and provincial partners in key sectors (hydropower, mining, and roads) is also lacking.

Therefore, the priority needs are (1) training to improve knowledge and capacity of PFRM and district staff/volunteers that are newly recruited and lack of basic knowledge on conservation principles and protected area management including patrolling, outreach, zoning, as well as establishing regulations and implement law enforcement and (2) development of manuals/guidelines on developing a management or strategic plans, planning and reporting for the provincial team including improving mechanisms for coordination within the province and Vietnam and support to the organization responsible for protected area management such as WMPA of NT2 and other supporting tools such as database and necessary manuals/guidelines. At the same time, effort will be made to strengthen PFRM capacity to conduct management initiative for protection forests in Nam Nguoang NPFA.

Implementing Approach: Most of the activities will be carried out in close

	<p>coordination and cooperation with and supervision of the Department of Forest Resources Management (DFRM) especially on training and development of manuals/guidelines. The training activities will be conducted through a series of training that may be facilitated by DFRM and the National University of Laos (NUoL) for provincial level where appropriate. A series of workshops will be conducted within the province specifically for key sector partners of PFRM managing PAs and PFAs such as POFI, PAFO, NT2 WMPA, WCS, WWF and other international organization. Also, training in specific topics related to policy and some field practice by the province is necessary. It is expected that DFRM and NUOL will provide guidance on necessary tools (guidelines and manuals based on the tools developed in partnership between NUOL and WCS) to support management of protected areas and protection forests. The provincial trainer team will provide necessary training for the district team with assistance from short-term experts to be hired from time to time during the planning. The expert will also advise on project implementation and monitoring as well as preparation of subproject progress reports as required by the provinces, EPF, and/or WB.</p>
<p>9. Sub-project objective <i>(only one sentence)</i></p>	<p>To improve the capacity of PFRM and its partners to manage protected areas (PAs) and protection forest (PFs) in Bolikhamxay Province</p>
<p>10. GoL Policy/Plan/Strategy supported by Sub-project <i>(including provincial if applicable)</i></p>	<p>Forestry Strategy to the Year 2020, by mainly protecting forest cover and not to converting protected areas - to increase forest cover at 70% by 2020. National Environment Strategy for the year 2020 – to have good environment. The subproject supports important national and regional strategies as below: National Biodiversity and Action Plan to the year 2020, by mainly protecting richness of biodiversity in protected areas Tiger National Action Plan, by mainly prohibition a trade of tiger's parts Poverty Reduction Strategy for the year 2020 by maintaining food sources and incomes through sustainable use of forest products.</p>
<p>11. Sub-project Regional or global outcomes (for protected area and wildlife related sub-projects only: e.g. cross border cooperation, knowledge transfer, prevention of regional illegal wildlife trade)</p>	<p>With the subproject interventions to make availability of the improved system, mechanism and increase knowledge or capacity of government staff through trainings, knowledge exchange and enhance a relationship of cooperation in the region especially with Vietnam as to prevent illegal poaching of forest resources crossing the border. This subproject will improve effectiveness of protected area management. Therefore, improvement of this work will contribute to the implementation of international conventions and regional agreements such as Convention on Biological Diversity (CBD), Convention on International Trade in Endangered Species (CITES), Lao-WEN and Mekong Biodiversity and Forestry Programme as well as the Lao-Vietnam Cooperation.</p>
<p>12. Sub-project Outcome Indicators</p> <p><i>Select and list the related outcome and intermediary outcome indicators from the PAW/LENS2 Results Framework and describe additional sub-project specific outcome indicators. Outcome/impact is the longer-term benefit of particular goods or services to a target group.</i></p>	<p>Sub-Project Outcome Indicators:</p> <ol style="list-style-type: none"> 1) Score of functional capacity of BLX-PFRM (annual) (also LENS2 Outcome indicator). 2) Lessons learned from regional travel, workshop with Vietnam, interaction with international NGOs that are effectively incorporated in provincial planning or management of protected areas 3) Approved second LENS2 subproject for BLX province with focus on Nam Mouane Nam Gnouang PF 4) Direct project beneficiary of which (20%) is a women as measured by additional staff of public and partner institutions having completed basic adaptive training (short courses) and study tours (also LENS2 IO indicator)

<p>13. Sub-project main outputs (Goods or services provided by the sub-project's intervention (supply-driven) e.g. x staff trained; guidelines on x developed)</p>	<p>1. Capacity building and coordination for PA and PF management</p> <p>1.1 Technical staff will be trained in practice of protected area management (45 staff).</p> <p>1.2 Technical staff and decision-makers will be participated in study tour on protected area management (2 times, 20 persons).</p> <p>2. Support for PA and PF management</p> <p>2.1 Stakeholder workshops toward better protected area management will be held for 5 times (as 2 for provincial and 3 for district).</p> <p>2.2 Key partner workshops toward better protected area management will be held in the province (4 times).</p> <p>2.3 Seminar workshops with neighboring province of Vietnam on PA cooperation (2 times).</p> <p>2.4 Conduct conservation awareness raising and dissemination on relevant laws at markets (8 times) and international days to public event (4 times).</p> <p>2.5 Support the protected area work at district level – District Office of Natural Resource and Environment of Kham Keuth District (6 times).</p> <p>2.6 Participate in management planning and monitoring of Nakai-Nam Theun NPA management and Nam Mouane–Nam Gnouang NPF subproject (6 times).</p> <p>2.7 Draft Provincial PA and PF strategy - Workshop with 7 District of Natural Resources and Environments to draft Provincial PAs and PFs Strategy for long term management (2 times per each)</p> <p>2.8 Prepare subproject proposal of improved coordination and cooperation for Nam Mouane and Nam Gnouang NPF management with completed safeguard process.</p> <p>3. Subproject administration and monitoring</p> <p>3.1 Reports of subproject administration and monitoring (annuals)</p> <p>3.2 Deliverables” proposed in the AWPB completed each year (annual) by PFRM</p>
<p>14. Sub-project Components and Activities: <i>List the components and main activities to produce outputs above. Do not use more than 5 components. Details will be in Annual Work Plan and Budget (AWPB) annex attached.</i></p>	
<p>Component</p> <p>Component 1. Capacity building and coordination for PA and PF management</p>	<p>Main activities –can't edit/change with this format</p> <p>TA, training and workshop for PFRM capacity building</p> <p>Activity 1.1 Staff training in priority topics of protected area management</p> <p>The central level (Department of Forest Resource Management) and National University of Laos (NUoL) responsible for training for some provincial staff focusing on building training of trainers that be able to train other staff especially at district level as well as protected area staff. Training in general theory or principle of protected area management should be conducted by central level but training knowhow in practice should be the provincial team such as in monitoring practice, planning and reporting, basic field technique, outreach and planning for land use including zoning for management. The training on-the-job training as training at class only for young staff cannot apply the knowledge gained completely to real practice. In addition, handbook/guides to support this work should be developed by central level (DFRM) but must be appropriated with the local needs and conditions. Anyway, provincial staff may be able to organize training themselves in year 2 onward.</p> <p>Activity 1.2 Study tour of staff and decision-makers</p> <p>Study tour and for lesson exchange with best practice projects on protected</p>

	<p>area management, co-management and cooperation will be held in the country and also abroad. The study tour will be arranged for whom having good performance as to obtain new lessons and also for decision-makers on lessons exchange with best practice project on protected area management. By selecting good performance staff is some sort of incentive and will encourage them to work actively and competitively. This study tour arrangement needs to work out with DFRM. Prior to the study tour it needs to prepare advance regarding the topics of interest and how to use the lessons into their work afterward.</p>
<p>Component 2. Support for PA and PF planning and management</p>	<p>Outreach partners, Vietnam colleagues and general public in the province</p> <p>Activity 2.1 Stakeholder workshops of province and district The stakeholder workshops on protected area at provincial and district level has not been held regularly. This workshop is to consult toward better protected area management and to avoid any development projects that might impact on the PAs. Any existing or planned projects of provincial departments or sectors which would impact on PAs has to be raised for discussion and finding solution as to mitigate negative impacts on biodiversity. Both provincial and district workshops need Provincial or Vice Provincial Governor to give a speech on dissemination the roles and responsibilities of PRFM/PoNRE and DoNRE, to call for relevant departments to participate in protected area management.</p> <p>Activity 2.2 Key partner workshops The key partner workshop is a small technical workshop or working group of key partners who have mandates on conservation working in the province but including the participation of DFRM to develop a better coordination for managing protected areas and protection forests in the province. This workshop is to identify key issues, gaps of coordination within the province and to national or district level. From the workshop the group may create principles or some agreement for better coordination and also cooperation as to report to the provincial stakeholder workshop.</p> <p>Activity 2.3 Seminar workshops with the neighboring province of Vietnam on transboundary PA cooperation. The coordination and cooperation with neighboring province of Vietnam as both technical and decision-makers has not been undertaken on the ground. It is therefore, a technical seminar workshop will identify particular activities to be cooperated as to prevent trespassers crossing the border illegally into NPAs of Laos for illegal harvest of forest products.</p> <p>Activity 2.4 Conservation awareness raising and dissemination of laws and regulations on protected area and wildlife. Conservation awareness raising for public, officials, soldiers, police and traders is essentially important. This activity it needs to also disseminate laws and regulations of protected area, to raise conservation awareness to target groups and market, in particular. The awareness raising at market is more about regulation dissemination and that necessary to work with market's owners, managers and of restaurants to understand and obtain their cooperation for prevention of illegal wildlife trading. Signboards may be renovated or newly established where necessary but require village authority and market managers to be part of it. Conservation awareness raising to general public particularly a need for government department or sectors to be aware and ownership in cooperation for prevention and addressing threats to protected areas. This may be held through appropriate provincial meetings/workshops and any celebration of international and national important days. Also, through radio program to encourage any organisations</p>

to obtain the importance and necessity of cooperation for prevention any impact or encroaching to protected areas.

Support NNT NPA planning and management

Activity 2.5 Strengthening capacity for District Office of Natural Resource and Environment (DoNRE)

Forest and water management unit of DoNRE especially Kham keuth DoNRE has not had full roles and responsibilities to participate in planning and implementing their mandates as necessary. Thus, activity plan should be supported by PFRM by providing necessary training and guiding some tasks from time to time as to meeting ability in carrying out their work in the future. Particularly, the participation and contribution to the management of Nakai-Nam Theun to be better effective.

Activity 2.6 Participation in Nakai-Nam Theun NPA Management Planning.

So far, the planning and management of Nakai-Nam Theun NPA has not yet well cooperated with other relevant government departments as necessary. It is only some staff assigned to work with them. Thus, the management planning of the NPA with relevant key departments or sectors is necessary as to ensure the protected area management work is part of priority importance of the district as well as the province. Ownership of the district is foreseen when agreements are made from on planning to budgeting and having regular meeting event including some decision-making. Kham keuth DoNRE will work with Nakai DoNRE of Khammouane Province by considering that Nakai-Nam Theun NPA is center for planning and coordination.

Prepare PA subproject for BLX province with focus on Nam Mouane Nam Gnouang PF

Activity 2.7 Draft Provincial PA and PF strategy

Workshop with 7 District of Natural Resources and Environments to draft Provincial PAs and PFs Strategy for long term long term management. As mentioned at the activity number 2.4, up to now PFRM is still do not have the provincial strategy on PA and PF and to be as a safeguard of implementation. The project will organize workshop with districts to get the ideas and understand current issues on management.

Activity 2.8 Preparation of additional financing subproject proposal for Nam Mouane – Nam Gnouang NPF and for capacity building of the Environment Division of PONRE

Regarding Nam Mouane-Nam Gouang, WCS will initiate conceptual modeling to determine landscape/target species, threats both direct and indirect, and interventions in this PA. PFRM will partner with WCS for planning for the management of PAs and PFs needs to ensure the project activities will not impact on local communities while they would have better benefit from the interventions. The large NPF such as Nam Mouane–Nam Gnouang NPFA (524,409 ha) is involved by many stakeholders including development projects but as to ensure the forests are protected to maintain their functions: biodiversity, watershed for livelihood and economic support systems such as agricultural and hydropower development that it needs better planning and management. Therefore, to develop PAs or PF subproject proposal needs to prepare with key stakeholders including local communities in order to ensure all safeguard (environment and social issues) are well consulted. Fieldworks for safeguard consultation at target sites, at district and provincial level will be conducted. The subproject will be prepared and submitted with its safeguard document. The target area of

	<p>LENS 2 subproject proposal selected is about 196,973 ha or covered of 37.75% of Nam Mouane–Nam Gnouang NPFA and 20 villages or 50% of total villages including Homechaleun, Thongmixay, Sivilay, Napheun, Namtong, Natho, Khonetao, Chomthong, Thadeua, Phiengthone, Soppat, Koktone, Phokham, Phonemeuang, Houyhoi, Phonedou, Xaychaleun, Namkou, Vangphieng and Nangang are selected as target villages (see attached map2). PFRM is discussing with WCS and other partners potential collaboration, joint design and co-financing.</p> <p>Regarding the component on capacity building of the Environment division, the subproject proposal is expected to focus on issues related to monitoring compliance of investment projects in Bolikhamxay province. The detailed design will be completed during subproject implementation and is expected include for example, training on compliance monitoring, database standardization and update, compliance monitoring field visit, etc.</p>
Component 3 Subproject administration and monitoring	<p>Sub-Project administration and management will follow the Project Implementation Manual (PIM), also on Financial Management, Procurement Manual and Monitoring and Evaluation Manual (M&E). Firstly, it needs to identify a project implementation team and to build a common understanding among the project team and with project supervisor on the project concept, project implementing approach, outcome and outputs of the project/sub-project to be achieved. Some sort of training and establishing a working system of the sub-project including accounting and monitoring system is necessary. A monitoring progress report of subproject indicators as well as a financial report including procurement will be prepared and submitted to EPFO bi-annually.</p>
15. Sub-project direct beneficiaries	<p><input checked="" type="checkbox"/> Governmental staff Total number (45) of which women (8) <i>Central level () of which women ()</i> <i>Provincial level (25) of which women (3)</i> <i>District level (20) of which women (5)</i></p> <p><input type="checkbox"/> Rural communities () Number of people () of which women () <input type="checkbox"/> Students () of which women () <input type="checkbox"/> General public <input type="checkbox"/> Private sector ()</p>
16. Proposed Start Date	October 1, 2015
17. Proposed End Date (duration in years)	September 30, 2017 (2 years)
18. Co-financiers (source and amount (US\$) including in-kind contribution; per component if possible)	<p>The government cofinancing budget is mainly for staffing and some operation including some funding solicited from Forest Resources Development Fund (FRDF). The government co-financing as kind-contribution regarding staff time and office space is estimated at the kip equivalent of US\$38,000 or about 12% of the subproject budget. The preparation of the Nam Mouane PFA subproject will be co-financed by WCS which intends to conduct a GIS/Remote sensing analysis to help refine the area(s) of interest, a threats assessment that would also ground truth the land cover classes. On the Vietnam side is Phu Mat National Park, and WCS is planning to discuss with rangers and others to gain an idea of the level of Vietnamese poaching. The threats assessment would feed into a conceptual modelling exercise that takes a systematic and logical approach towards selecting landscape target species, identifying threats (both direct and indirect), and interventions. This will count as cofinancing but the amount is not known yet.</p>

<p>19. Complementary ongoing or planned projects/programs/initiatives (name/source of funding/linkage)</p>	<p>The Wildlife Conservation Society has been supporting the management of the Nam Kading NPA for a decade and expanded its program in Bolikhamxay province to include Phou Sithone Endangered Species Conservation Area and Nam Gnouang South Protection Forest. The proposal is complementary to the activities funded and carried by the Watershed Management and Protection Authority (WMPA) in the Nam Theun 2 watershed and in collaboration with the Khamkeut DONRE as a parallel project. PPFM will explore with WCS and other partners a potential partnership and cofinancing for the Nam Mouane-Nam Gnouang NPF subproject. The subproject also complements the subproject proposed by the National University Faculty of Economic and Business to organize Payment for Ecosystem Services in the Phou Chom Voy Provincial PA. POFI will be implementing a LENS2 subproject to strengthen its own capacity to monitor the illegal wildlife trade. WCS intends to help to tackle wildlife trade by enhancing cooperation among China, Vietnam and Laos. In Laos, this project is focusing on BLX Province..</p>
-------------------------------------------------------------------------------------------------------------------	---------------------------------------------------------------------------------------------------------------------------------------------------------------------------------------------------------------------------------------------------------------------------------------------------------------------------------------------------------------------------------------------------------------------------------------------------------------------------------------------------------------------------------------------------------------------------------------------------------------------------------------------------------------------------------------------------------------------------------------------------------------------------------------------------------------------------------------------------------------------------------------------------------------------------------------------------------------------------------------------------------------------------------------------------------------------------------------------------------------------------

20. Implementation Arrangements

a. Describe the project management structure.

b. What additional staffing or technical assistance is needed to successfully complete the proposed project (e.g. M&E officer, accountant, ...)?

a. Project Management Structure/sub-project implementation team

The project is under the responsibility of PONRE Bolikhamxay. The daily implementation is entrusted to PFRM in collaboration with other sections in PONRE especially the Environment Impact section. The subproject's organization structure will be including a project supervisor, project head and technical team. The project supervisor is Deputy Director General of Department of Forest Resource Management in consultation with the Director or Deputy Director of PAFO but not involve in a day-to-day project implementation. The project head should be assigned to work mainly for this subproject and working with the project technical team. The project technical staff team will be government staff which will include a person responsible for monitoring and evaluation, planning and accounting. Finance is important which maybe a need to hire an accountant who is appropriate qualification to help.

Sub-Project Implementation Team as follow in below:

- **Project Supervisor**
Mr. Kongly MANOKOUN

- **Project Director and Project Coordinator**
Mr. Somphou CHOUMMALAVONG
Tel: 020 23411115

- **Assistant / Deputy Project Director and Coordinator**
Mr. Xaysompheng SENGKHAMYONG
Tel: 020 22230678

- **Project Accountant**
To be recruited.

Any government staff who will be assigned to work under this subproject will have terms of reference especially the project head, M&E and Accountant. Review of performance of the project staff team members is needed from time to time as to identify whether any specific or additional training is needed as to fulfill the tasks.

b. Additional Staffing/Technical Assistance (TA)

As budgeted, short-term experts will be hired to help design, plan and provide training for the project

team from time to time to ensure quality of project products. The recruitment for any position will be led by EPF with assistance from DFRM. Trainer for specific tasks will be the senior staff of the NUOL or DFRM who are qualified in providing the needed assistance..

C. PFRM / PONRE partners

Key partners

- Department of Forest Resources Management (DFRM)
- Faculty of Forestry, NUoL
- Provincial of Forest Inspection (PoFI)
- Watershed Management Protection Authority of Nakai Namtheun NPA (WMPA)
- Environment Protection Fund (EPF)
- Wildlife Conservation Society
- Theu-Himboun Company (THPC)
- Vietnam protected area authorities

Regular partners

- Department of Forest Inspection (DFI)
- Provincial Agriculture and Forestry (PAFO)
- Provincial of Natural Resources and Environment of Khammouane Province
- Bolikhamxay Agriculture and Forestry Colleague
- Provincial Radio and Television
- Provincial Investment and Planning
- Provincial Rural Development
- Provincial Women Union
- Provincial Police
- Provincial Military
- District of Natural Resources and Environment (DoNRE)
- District Agriculture and Forestry Office (DAFO)
- District Forest Inspection
- District Women Union
- District Rural Development
- District Administration Office
- District Police
- District Military
- Cluster / Zone officials
- 22 Village authorities
- Village Forestry Officer in 22 villages
- Village Military in 22 villages
- Village Women Union in 22 villages.

21. Summary Budget

Detailed activity plan and budget for total period and year one must be attached in annex. Provide a summary of the budget as part of the proposal. Note that the sub-project will be approved for the entire duration but the sub-grant agreement will be signed on a yearly basis based on previous year performance (and agreed triggers as defined in section 24). For approved sub-projects, a procurement plan will be developed by EPFO.

Components (not more than 5 components including project management)	LENS2 financing US\$	GoL-in kind US\$	Total US\$
(1) Capacity building and coordination for PA and PF management	120,250	0	120,050
(2) Support for PA and PF Management	104,700	0	104,700
(3) Subproject administration and monitoring	28,600	35,000	63,600
Base cost	253,550	35,000	288,550
Contingency (10%)	27,450	-	27,450
Total	281,000	35,000	316,000

22. Sustainability

Please explain how the benefits of the project will continue or be maintained once the sub-project is complete.

The sustainability of the subproject lies in the fact that improving the qualification of human resource is by definition a sustainable enterprise. In addition, new planning and management mechanism and working system, including partnerships, once adopted by PONREE will be applicable throughout the province. The project will provide support to the project implementation team and provide training to responsible staff at provincial and district levels so they improve technical capacity to manage provincial and districts PA and PF. Senior staff who have knowledge and experience to become training of trainer (ToT) will be trained in pedagogic practices and then train other staff. In addition, junior staff will work with the team as to provide them an opportunity to learn through mentoring. Mechanism, system or procedures and tools which will be in place to be used and improved for effective coordination and cooperation for supporting protected area management into the future.

23. Environment and Social Management Plan (ESMP)

Check if an Environmental and Social Management Plan (ESMP) needs to be prepared (see guidelines in the Environment and Social Management Framework (ESMF) to be obtained from EPF website).

This subproject is classified onto the project type C which has no any impact on environment and social. The project's activities are to build staff capacity, improved coordination and cooperation through workshops, planning and exercise in protected area management. With reference to the negative checklist of this project it does not have any activities that may generate impact on environment and social aspect. Therefore, this subproject has no any activity that would create or lead to subsequently impact on environment and social. However PONRE will prepare a subproject for a provincial protection forest which will be of Cat B and will require a full Environment and Social Management Plan which will be developed with funding under the present subproject.

24. Community Engagement including gender issues at community level

Check if compliance with the Community Engagement Framework (CEF) is needed and follow guidelines on steps to be obtained from EPF website.

Please check if CEF applies³

Local communities, especially those around NNT NPA and around the area of the proposed additional subproject, will engage in participatory protected area management planning which will be conducted with DoNRE and NT2 WMPA and that through some interviews on some points concern to them as to obtain their point of views and to increase better ownership in protected area management, also recognizing their rights and safeguard. It needs to emphasize their volunteer participation which outreach at villages will improve and bring their interest.

25. Gender issues (mainstreaming)

Please explain how the sub-project is complaint with GoL commitment to gender issues under the project.

Planning on arrangement of staff for any project activity should take account of gender issue which at least 20% of the participants must be a woman. The project activities which to identify participants for training, study tour and a meeting require to check a proportion of women's participation.

26. Agreed Annual Performance Triggers

For information find below the list of agreed targets that must be achieved to trigger approval of next year's funds: Agreed triggers:

- Compliance with fiduciary and safeguard requirements (at least Moderately Satisfactory in year 1 and Satisfactory in subsequent years)

³ Please follow the procedures outlined in the CEF document and ensure that details related to sub-project CEF implementation including implementation arrangements, activities, indicators and budget are correctly included in the related sub-project application sections (RF, budget, activities, M&E).

- Compliance with reporting requirement (number, quality and timeliness) (at least Moderately Satisfactory in year 1 and Satisfactory in subsequent years)
- Year 1, at least 50 % of activities in AWPB completed. Year 2 and after, at least 75 % of activities in AWPB completed
- All outcome targets for current year are measured, evaluated and show progress toward target
- AWPB produced for the new fiscal year cleared by WB and approved by EPF Board

27. Document Checklist

Please ensure to attach the following based on templates (excel file) provided:

- Sub-project results framework (entire period)
- Sub-project detailed budget entire period (2a. per component and 2b. per category)
- Sub-project detailed activity work plan per component year 1
- Sub-project Environmental and Social Management Plan (ESMP) if applicable

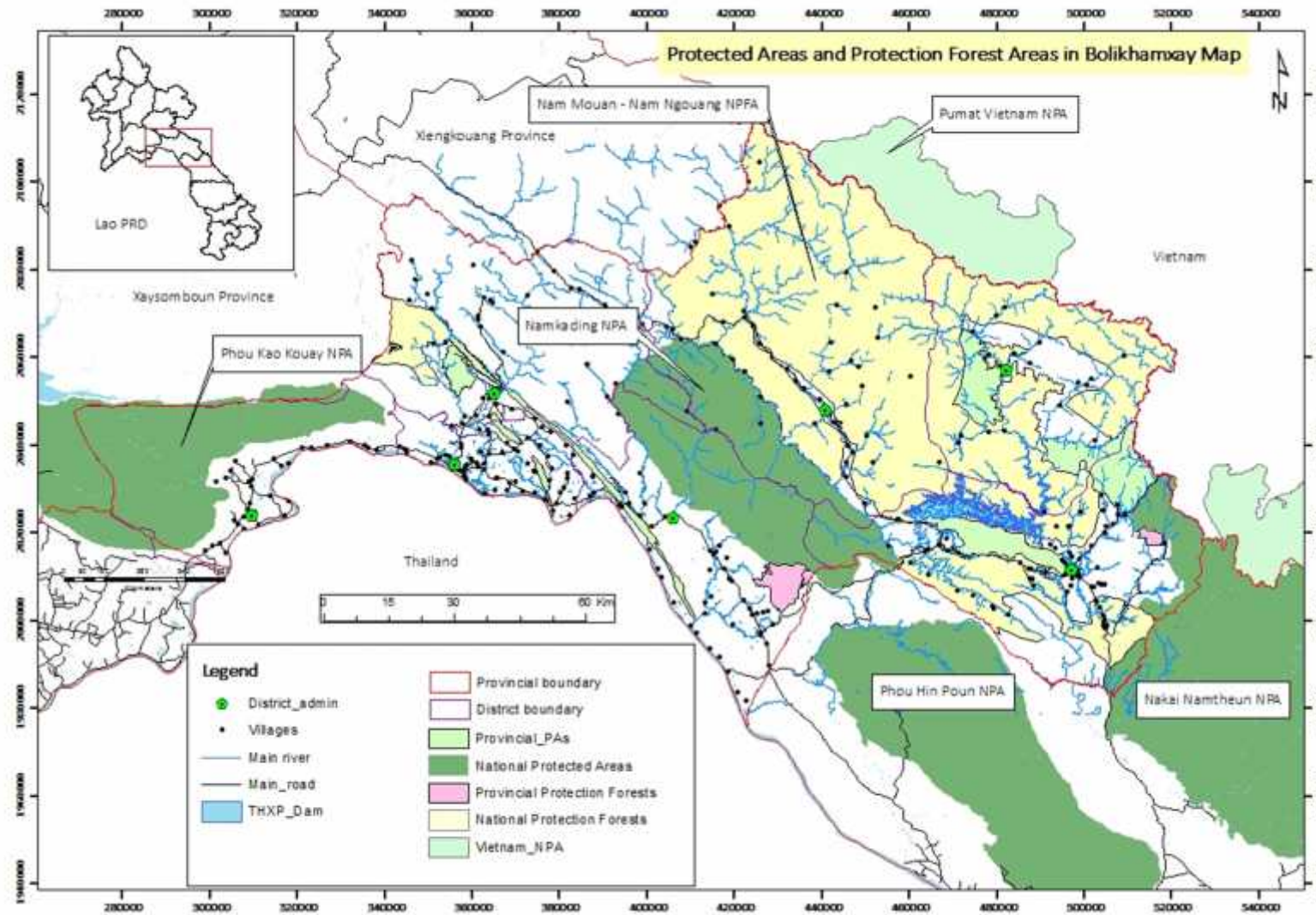
Signature

Approved by:
BolikhamxayPoNRE
(Head/DG of SDA or equivalent)

Date: Submitted by:
Bolikhamxay PFRM

Edits to a submitted application prior approval not requiring-submission, accepted by SDA and EPF, are summarized below: (Please list application form reference number (e.g. #20) or annexes and date of EPFO communication on accepted changes to SDA).

Map 1: Protected Areas and Protection Forests in Bolikhamxay Province



Map 2: Target area of LeNS Subproject proposal

